

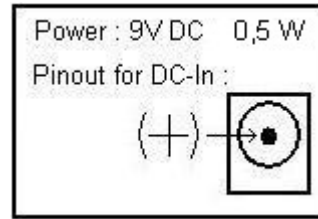
C64TPC User Manual

- port on your PC, requires USB/RS232 convertor.)
- Commodore 64.

1.3 Package Contents

- The C64TPC Device.
- Serial Cable
- User Manual (This manual)

2. C64TPC Device



There are three LEDs on the C64TPC device. These LEDs provides info about device status.

LED Status			
Green	Left Amber	Right Amber	Description
	Light	Light	There is no opened virtual driver.
Light			C64TPC is ready and waiting request from C64.
	Light		C64TPC is transferring data from PC to C64
		Light	C64TPC is transferring data from C64 to PC.
Light	Blink	Blink	C64 is closed. Please don't forget me too.

Device uses RS232 (serial) interface for PC connection. C64TPC uses this settings:

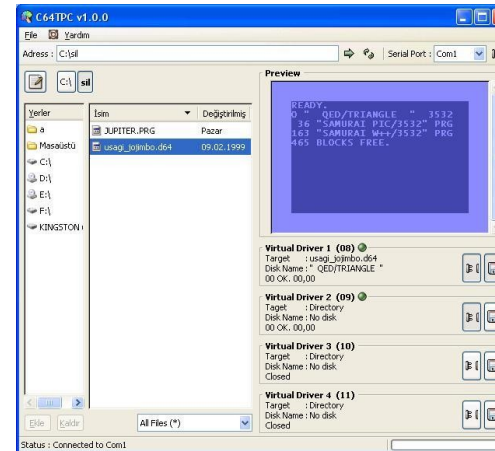
Data bits: 8
Stop bits: 1
Flow Control : Hardware
Parity: None
Baud: 19200

The software configures PC's serial port. You needn't these info normally. But if you use USB/RS232 convertor, you may need to configure your virtual serial port by these settings.

3. C64TPC Software

You can download the C64TPC software from

<http://www.cancarpet.com/saymantek>.



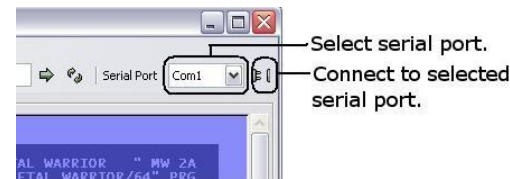
(Screenshot 1)

3.1 Installation

Installation is very easy. Please run c64tpc_setup.exe program and follow instructions. Default target folder is "C:\Program Files\C64TPC". Default executable path is "C:\Program Files\C64TPC\bin". You will see program shortcut in Start Menu after installation.

3.2 Usage

First, you must select a serial port and connect it. This port must C64TPC device's port.



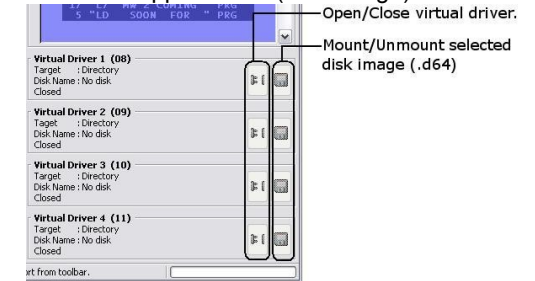
(Screenshot 2)

C64TPC software supports four virtual driver. Each virtual drivers contains two toggle button. You can assume these buttons as Disk Drive's power switch and diskette latch.

You must open before using any virtual driver. C64TPC can work with real 1541 Disk Drive at the same time. You must be careful of the device number, so they do not conflict with eachother. If your 1541 Disk Drive's device number is 8, you can't open Virtual Driver 1

(8).

Software supports D64 (Disk image) file



(Screenshot 3)

format. You can select a target from file browser. Target can be a D64 file or any directory in the PC's file system. When your target was a D64 file, software mounts to its and your command (LOAD, SCRATCH, etc.) applies inside mounted D64 file. When your target was a directory in PC's file system, your commands applies inside this folder and you can't use joker character ("*", "?", etc.) in commands.

4. Examples

Please careful to toggle buttons status and texts in Screenshot 5. Virtual Driver 1's target is "usagi_jojimbo.d64" file. Virtual Driver 2's target is "c:\sil" folder. Virtual Driver 3 and 4 are closed.

Now, you can load "SAMURAI PIC/3532" file in usagi_jojimbo.d64 from Virtual Driver 1 to C64. You can enter one of these commands to Commodore 64:

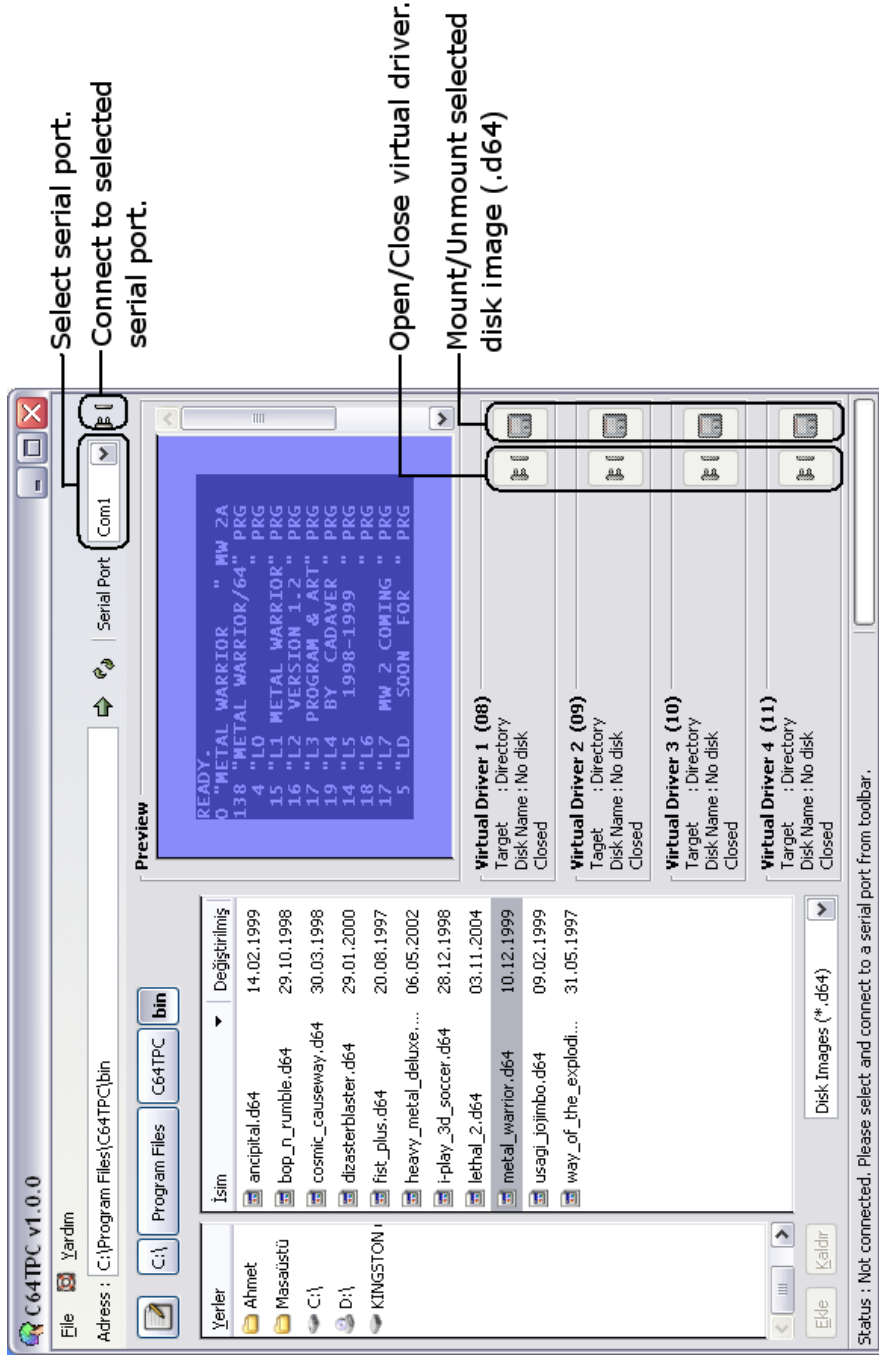
LOAD "SAMURAI PIC/3532",8 or
LOAD "*",8
Eight is device number of Virtual Driver 1.

For loading "JUPITER.PRG" file in "C:\sil" folder you must enter this command from Commodore 64:

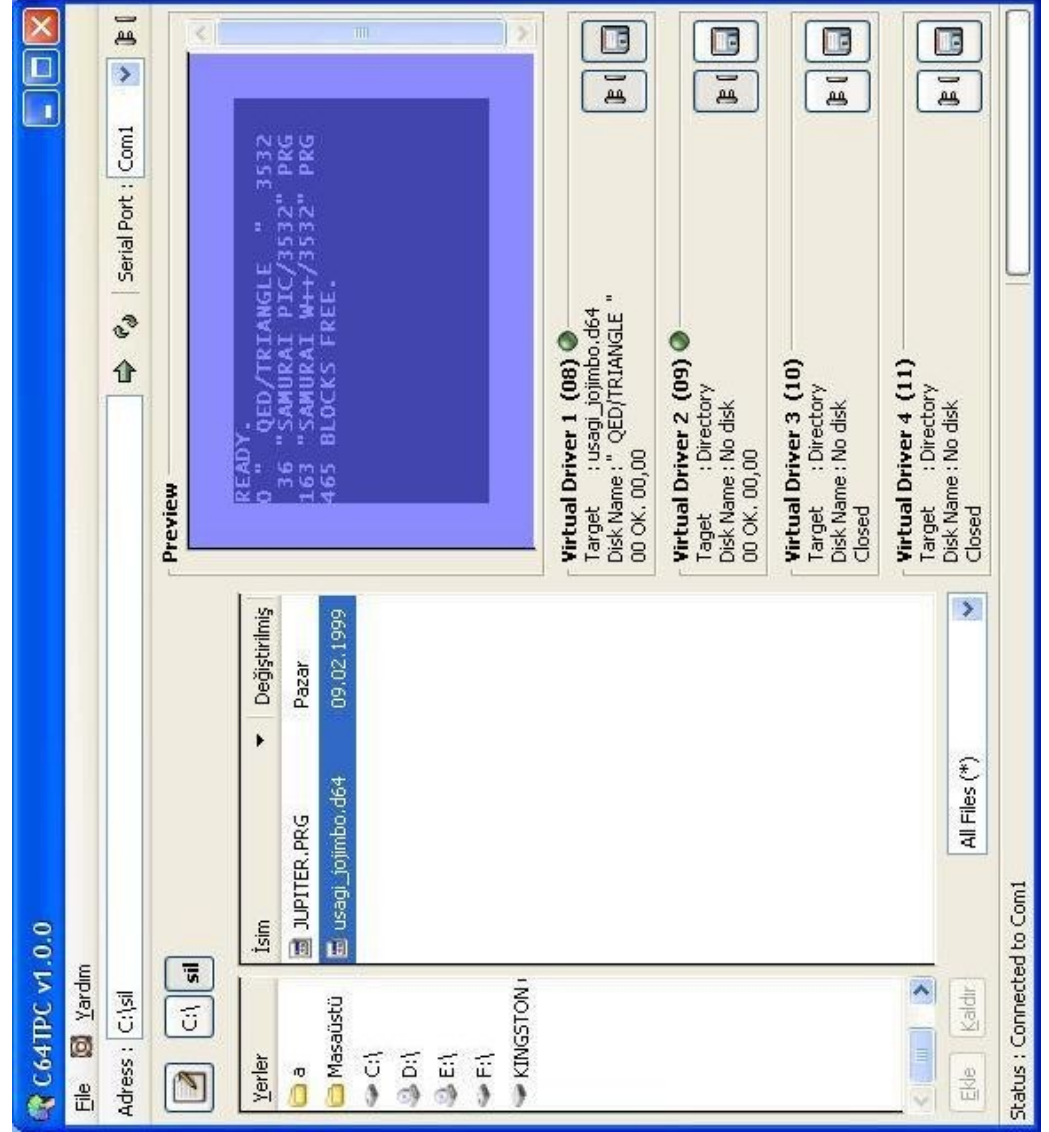
LOAD "JUPITER.PRG",9
Nine is device number of Virtual Driver 2. These commands doesn't work:

LOAD "*", 9 or LOAD "JUP?TER.PRG",9
Because Virtual Driver 9's target is a directory and you can't use joker caharacters in this mode.

In this example, Virtual Driver 3 (Device no 10) and Virtual Driver 4 (Device no 11) are closed and inaccessible.



(Screenshot 4)



(Screenshot 5)