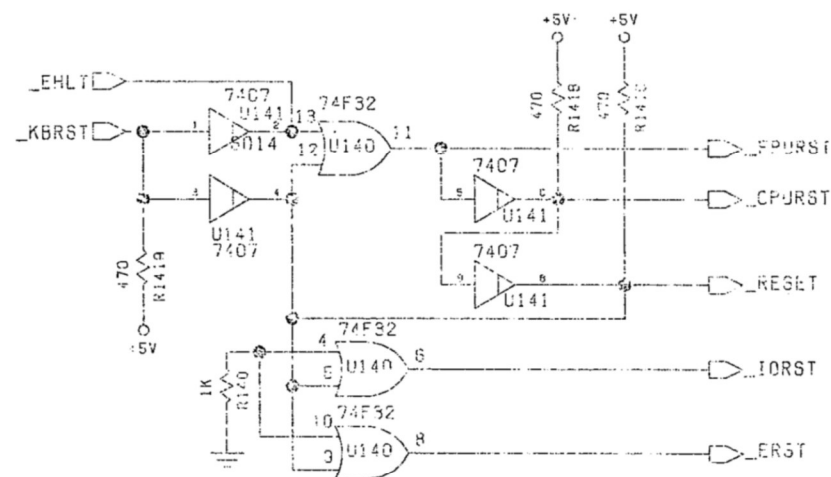


LEND U141-SUB TO SCSI
LEND U141-SUB TO HARDDISK
LEND U106-SUB TO GARY

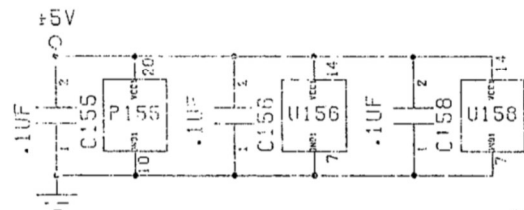
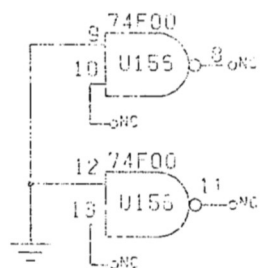
100-149



CLOCK S

[illegible]

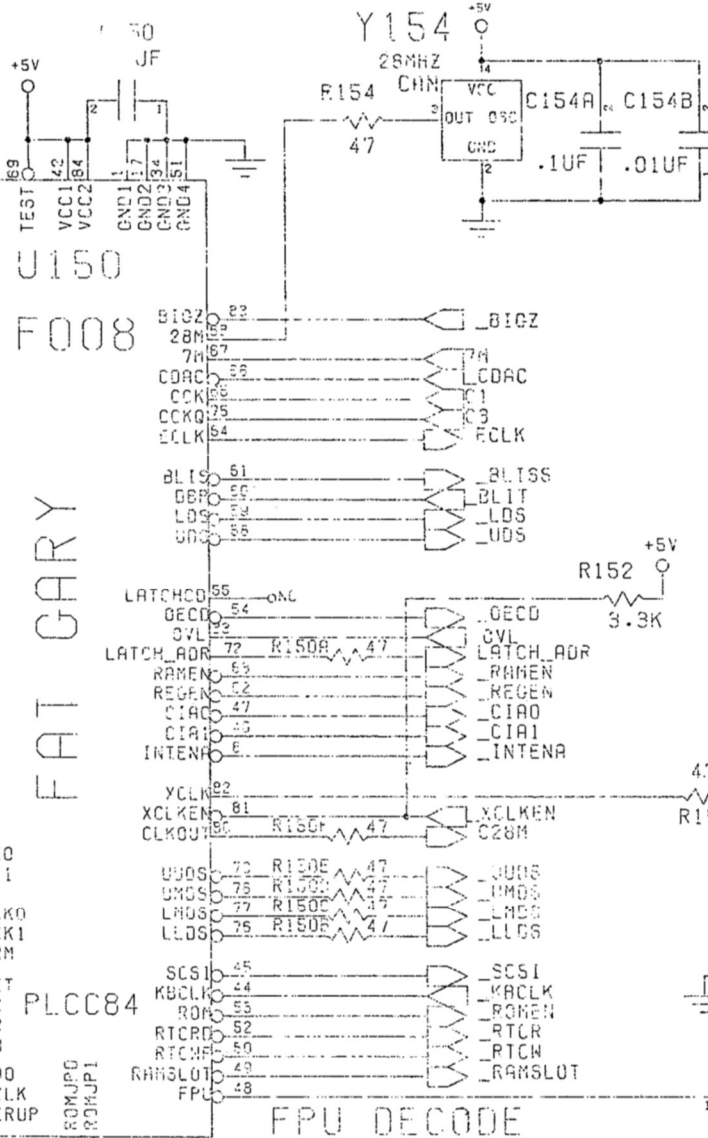
A(31:0)
D(31:0)



J151

ROMSPEED

OPEN = 200NS
CLOSED = 160NS

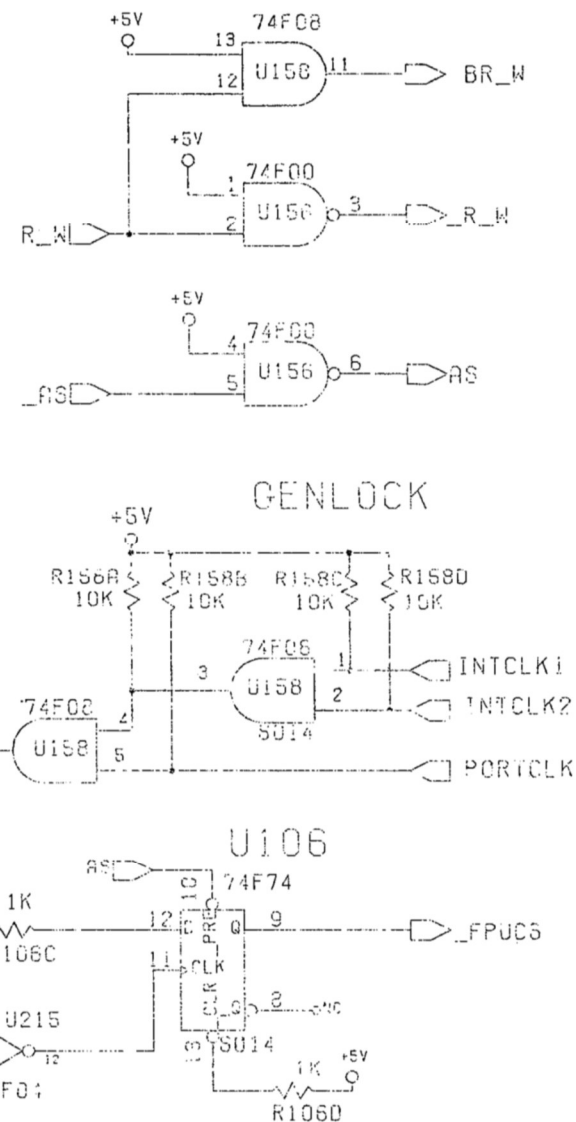


150-159

© 1995 COMMODORE BUSINESS MACHINES
INFORMATION CONTAINED HEREIN IS THE UNPUBLISHED,
CONFIDENTIAL AND TRADE SECRET PROPERTY OF
COMMODORE BUSINESS MACHINES, INC. ANY USE,
REPRODUCTION OR DISCLOSURE OF THIS INFORMATION
WITHOUT THE PRIOR WRITTEN PERMISSION OF
COMMODORE IS STRICTLY PROHIBITED.

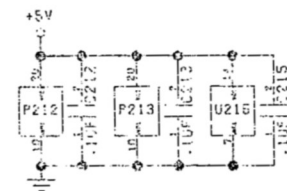
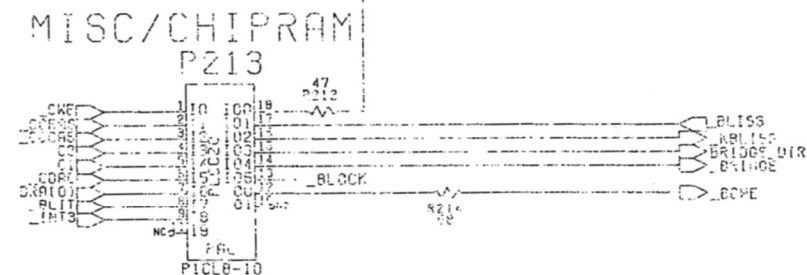
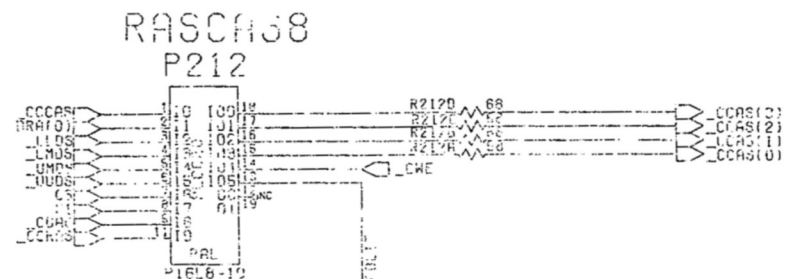
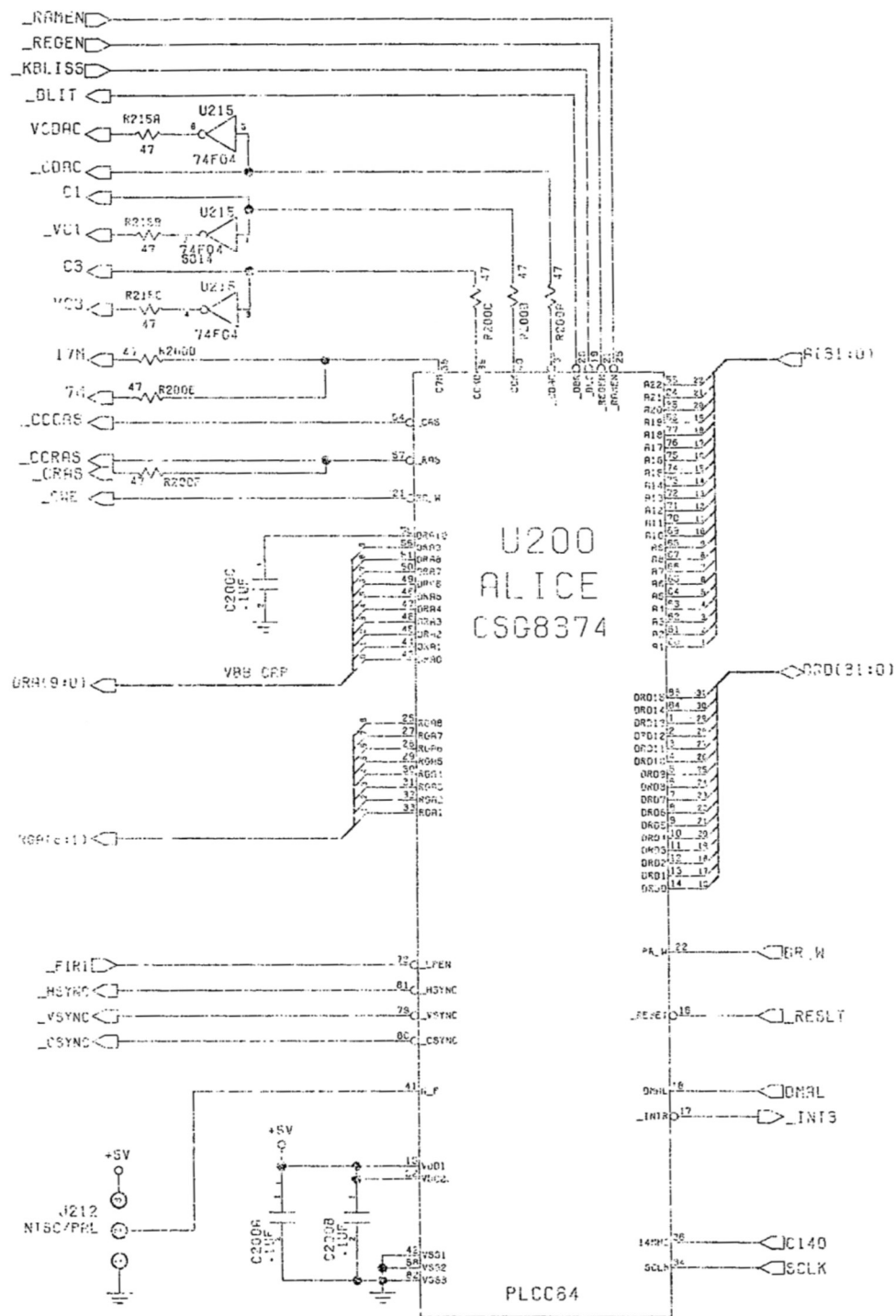
C.A.D. GENERATED

NO FURTHER CHANGES MAY BE MADE TO THIS DOCUMENT



FAT GARY

	UNCLASSIFIED	DATE	COMMODORE	
	TOP SECRET	11/13/92		
	GROUP 1			
	EXCLUDED FROM AUTOMATIC DOWNGRADING AND DECLASSIFICATION	06/01/93	SCHEMATIC	
	REFERENCE GROUP		A4000T	
USPD ON	NEXT STEP	SIZE	365149	REV
A4000T	365150	C		C
SCALE NONO			SHEET 3 OF 16	



LEND U215-SUB TO GARY
LEND U215-SUB TO PAULA
LEND U215-SUB TO EUSTER

200-249

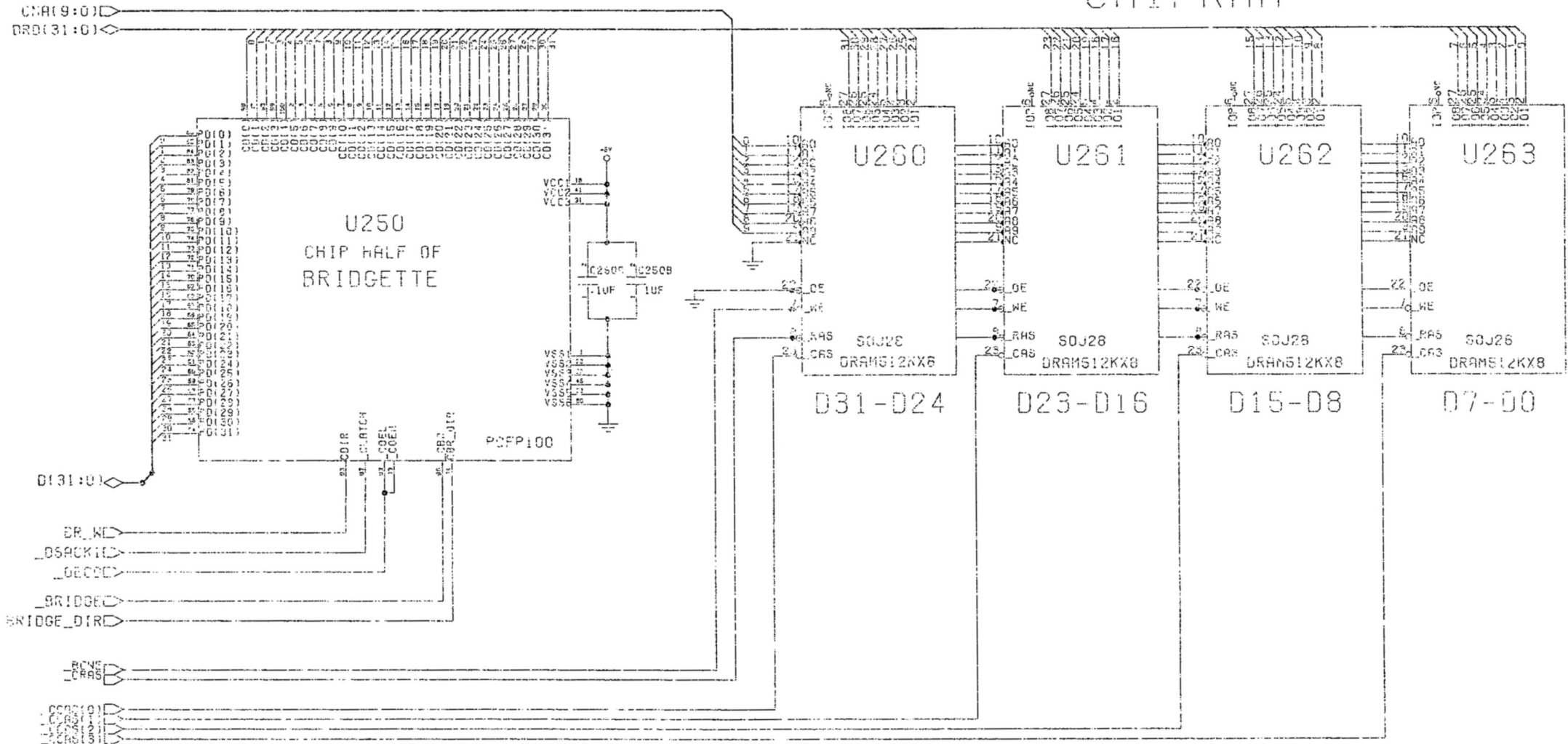
ALICE

© 1982 COMMODORE-AMIGA, INC.
INFORMATION CONTAINED HEREIN IS THE UNCLASSIFIED
CONFIDENTIAL AND TRADE SECRET PROPERTY OF
COMMODORE-AMIGA, INC. NO USE, REPRODUCTION,
OR DISCLOSURE OF THIS INFORMATION WITHOUT THE
PRIOR WRITTEN PERMISSION OF COMMODORE IS
STRICTLY PROHIBITED.

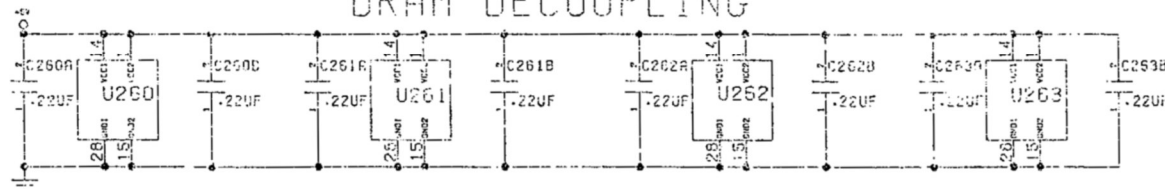
FILED GENERATED
NO PRINTING OR REPRODUCTION OF THIS DOCUMENT

COMMODORE
P4000T
3651491c
PCB RING 1001 S OF 10

CHIPRAM




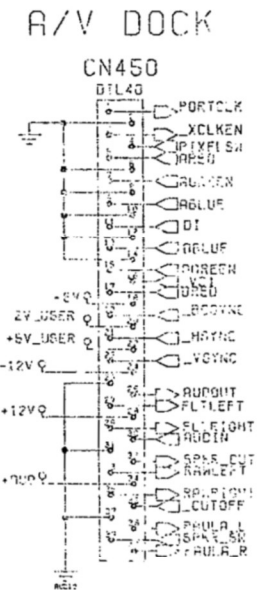
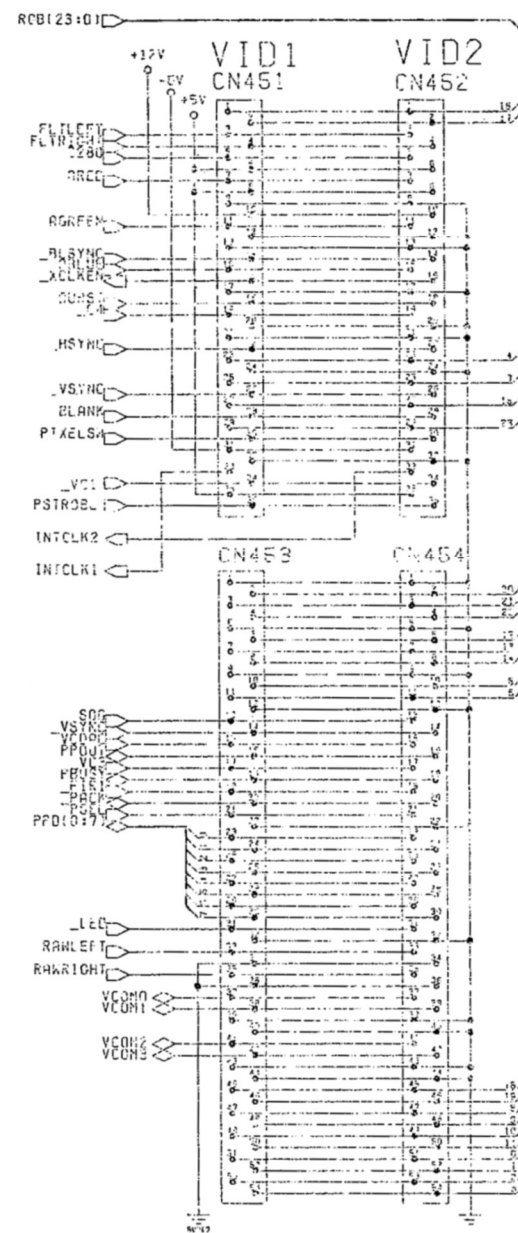
DRAM DECOUPLING

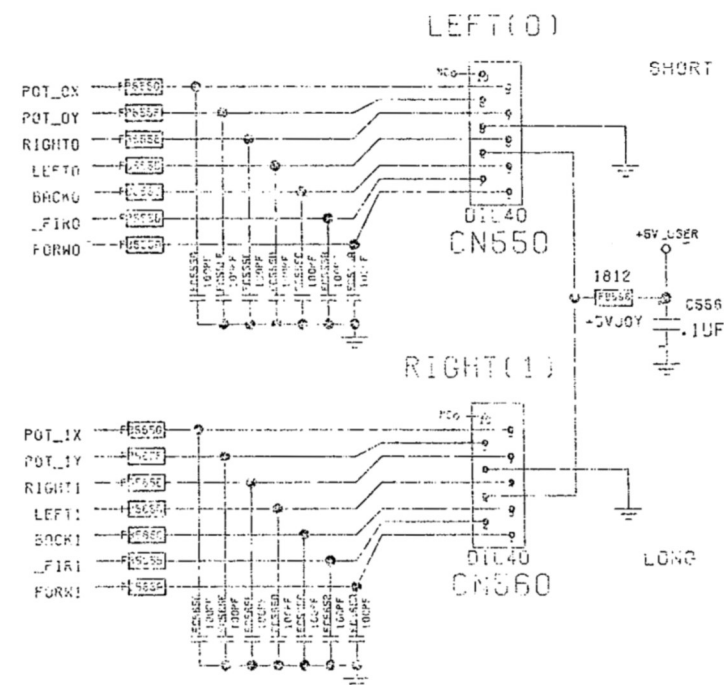
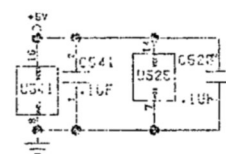
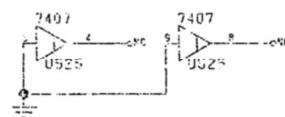
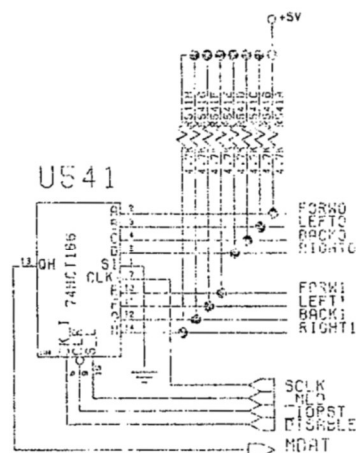
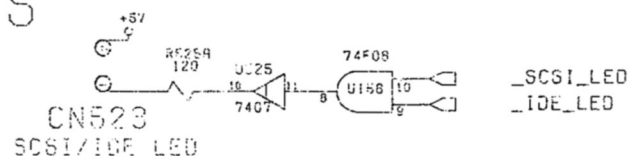
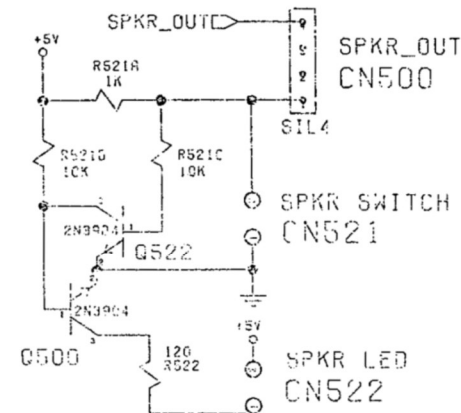


250-299

CHIP RAM

© 1990 COMMODORE BUSINESS MACHINES INFORMATION CONTAINED HEREIN IS THE UNPUBLISHED, CONFIDENTIAL AND TRADE SECRET PROPERTY OF COMMODORE BUSINESS MACHINES CO., INC. ANY REPRODUCTION OR DISCLOSURE OF THIS INFORMATION WITHOUT THE PRIOR WRITTEN PERMISSION OF COMMODORE IS STRICTLY PROHIBITED.				DATE: 11/11/89 TYPE: LAYOUT BY: J. L. BROWN CHECKED: J. L. BROWN APPROVED: J. L. BROWN PART: 385150 SHEET 6 OF 18	
C.A.D. GENERATED				COMMODORE SCHEMATIC A4000T C1365149 385150	
NO MINOR CHANGES MAY BE MADE TO THIS DOCUMENT					





PAULA

© 1990 COMMODORE BUSINESS MACHINES
INFORMATION CONTAINED HEREIN IS THE UNPUBLISHED
CONFIDENTIAL AND TRADE SECRET PROPERTY OF
COMMODORE BUSINESS MACHINES, INC. ANY
REPRODUCTION OR DISCLOSURE OF THIS INFORMATION
WITHOUT THE PRIOR WRITTEN PERMISSION OF
COMMODORE IS STRICTLY PROHIBITED.

C.A.O. GENERATED

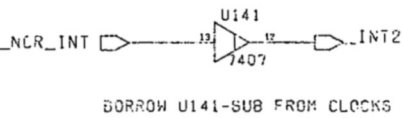
NO MANUAL CHANGES ARE TO BE MADE TO THIS DOCUMENT

C	PROPERTY OF	DATE	COMMODORE	
	PAUL L. BAKER	11/20/78		
	CLASS	11/20/78		
	SCHEMATIC			
	OFFICE USE		A4000T	
	USED ON	NEXT DATE	SIZE	REV
	AUGUST	365150	C	365149
COPYRIGHT 1978 BY			SAMPLE NONSHEET 9 OF 16	

BORROW U158-SUB FROM GARY
BORROW U215-SUB FROM ALICE

US10

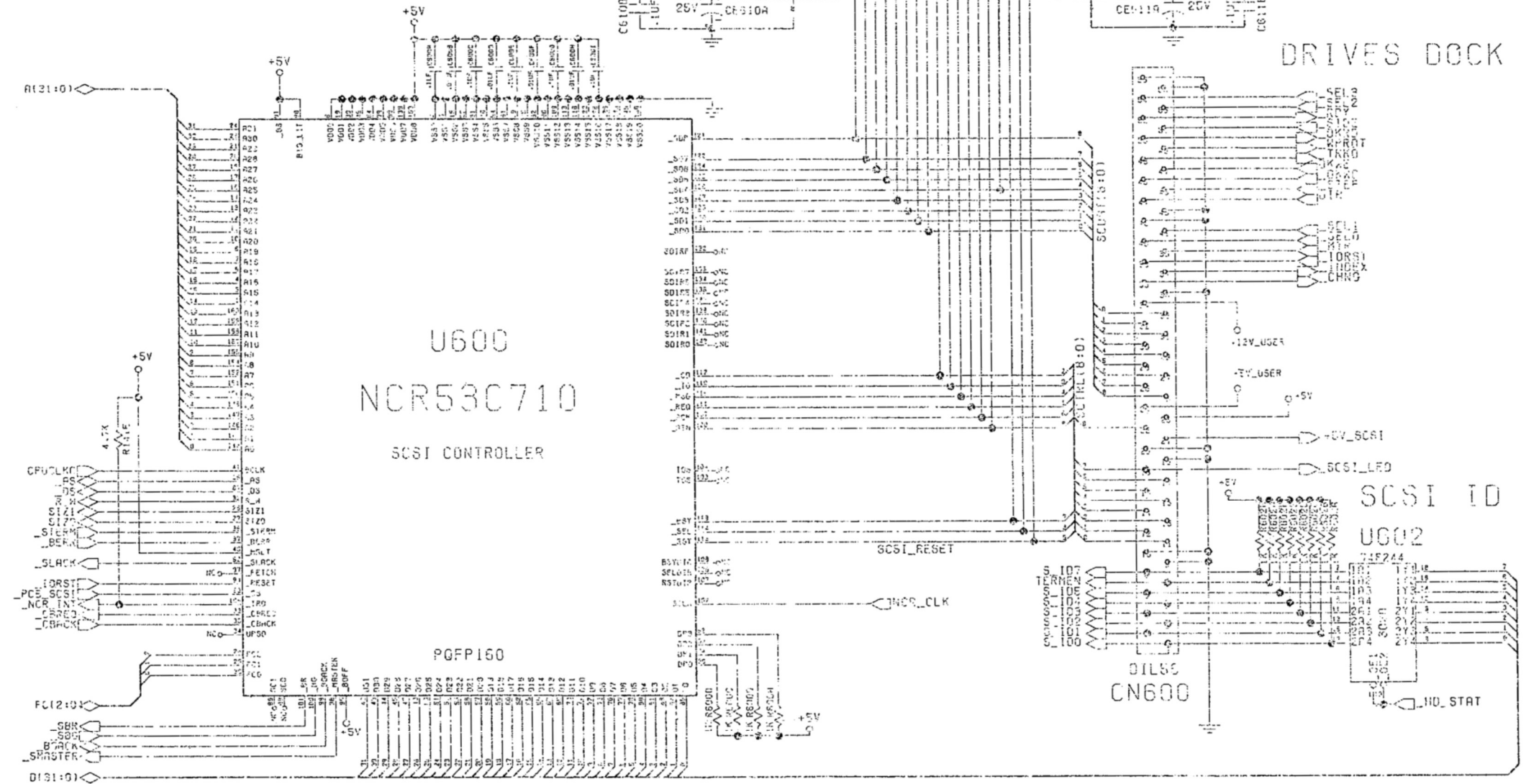
U6 1 1



```

graph LR
    NCR_INT[_NCR_INT] --> U141[7407]
    U141 --> INT2[_INT2]
  
```

BORROW U141-SUB FROM CLOCKS



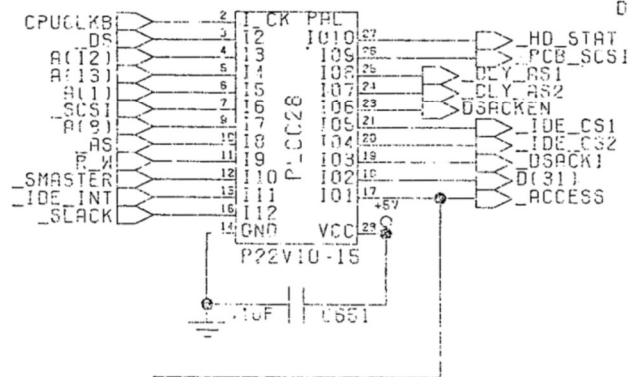
DRIVES DOCK

SCSI ID
UG02

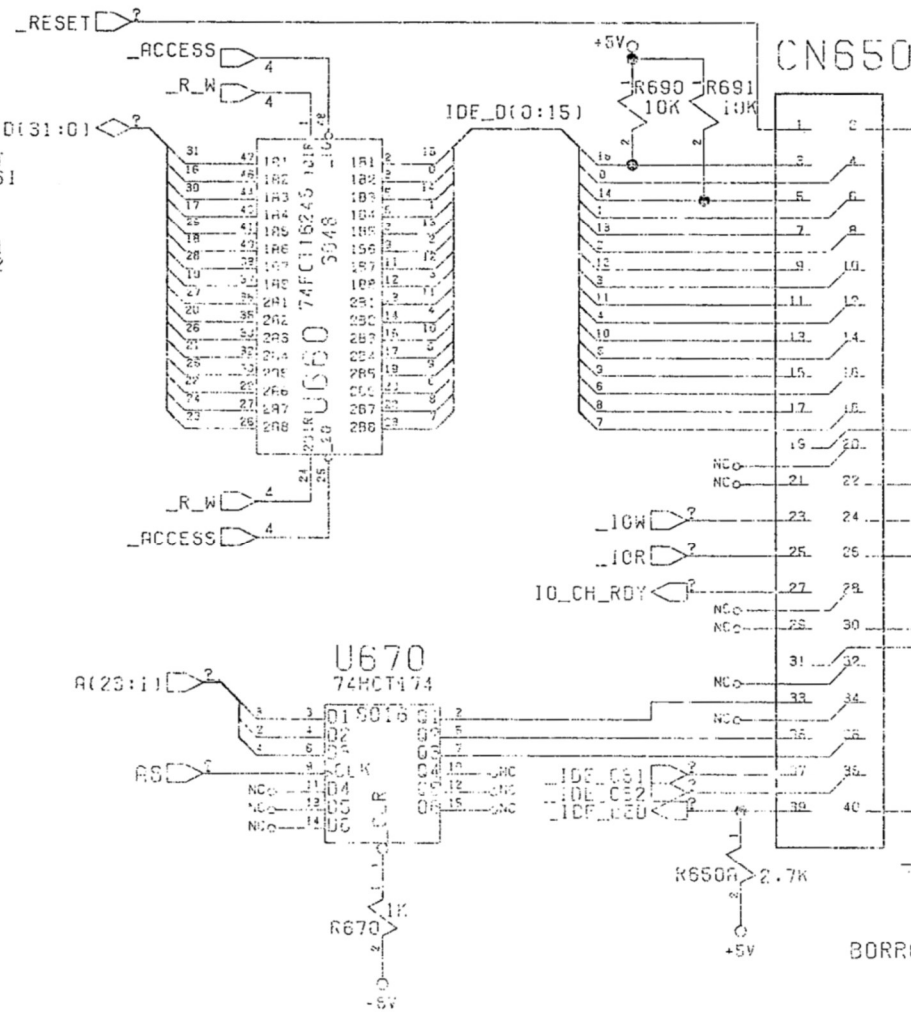
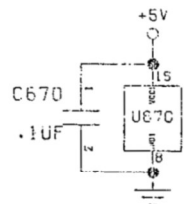
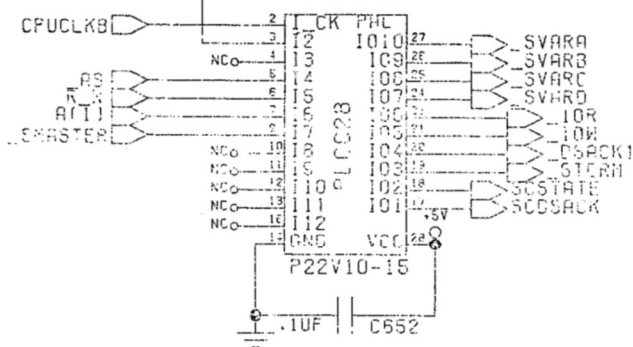
600-649

SCSi

HD_DECODE P651



HD_STATE P652



AT IDE
INTERFACE

BORROW U141-SUB FROM CLOCKS

650-699

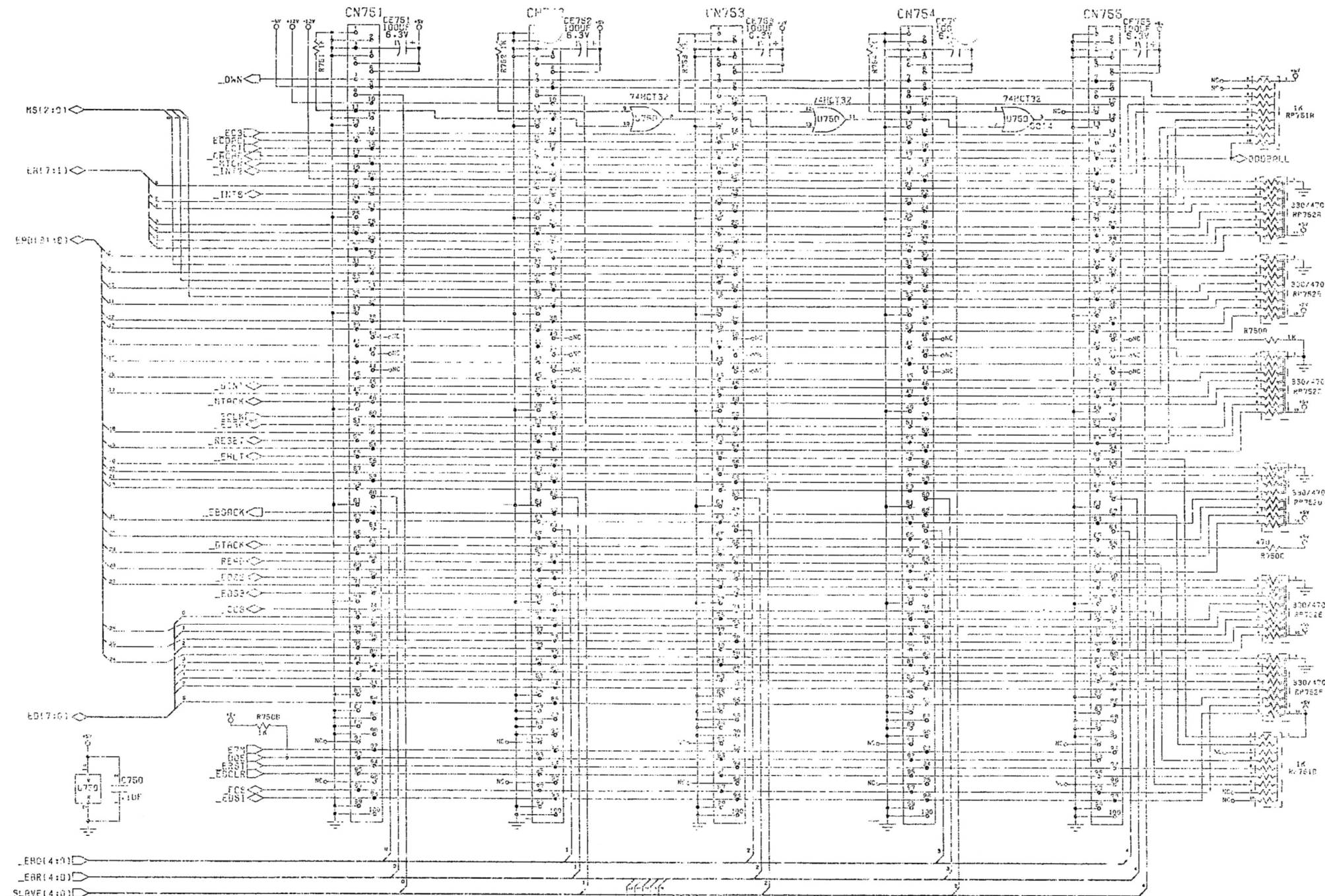
AT IDE HD INTERFACE

© 1990 COMMODORE BUSINESS MACHINES
INFORMATION CONTAINED HEREIN IS THE UNPUBLISHED,
CONFIDENTIAL AND TRADE SECRET PROPERTY OF
COMMODORE BUSINESS MACHINES, INC. ANY USE,
REPRODUCTION OR DISCLOSURE OF THIS INFORMATION
WITHOUT THE PRIOR WRITTEN PERMISSION OF
COMMODORE IS STRICTLY PROHIBITED.

C.A.D. GENERATED

NO MANUAL CHANGES MAY BE MADE TO THIS DOCUMENT

MINI-MAXI PAPIL LASSA	DATE 11/16/90	COMMODORE
CARD1		
REVISION R001	06/11/95	
REFERENCE GROUP		
USED ON A4000T	NEXT ASSY 365150	REV C
SCALE	NONET	SHEET 12 OF 15



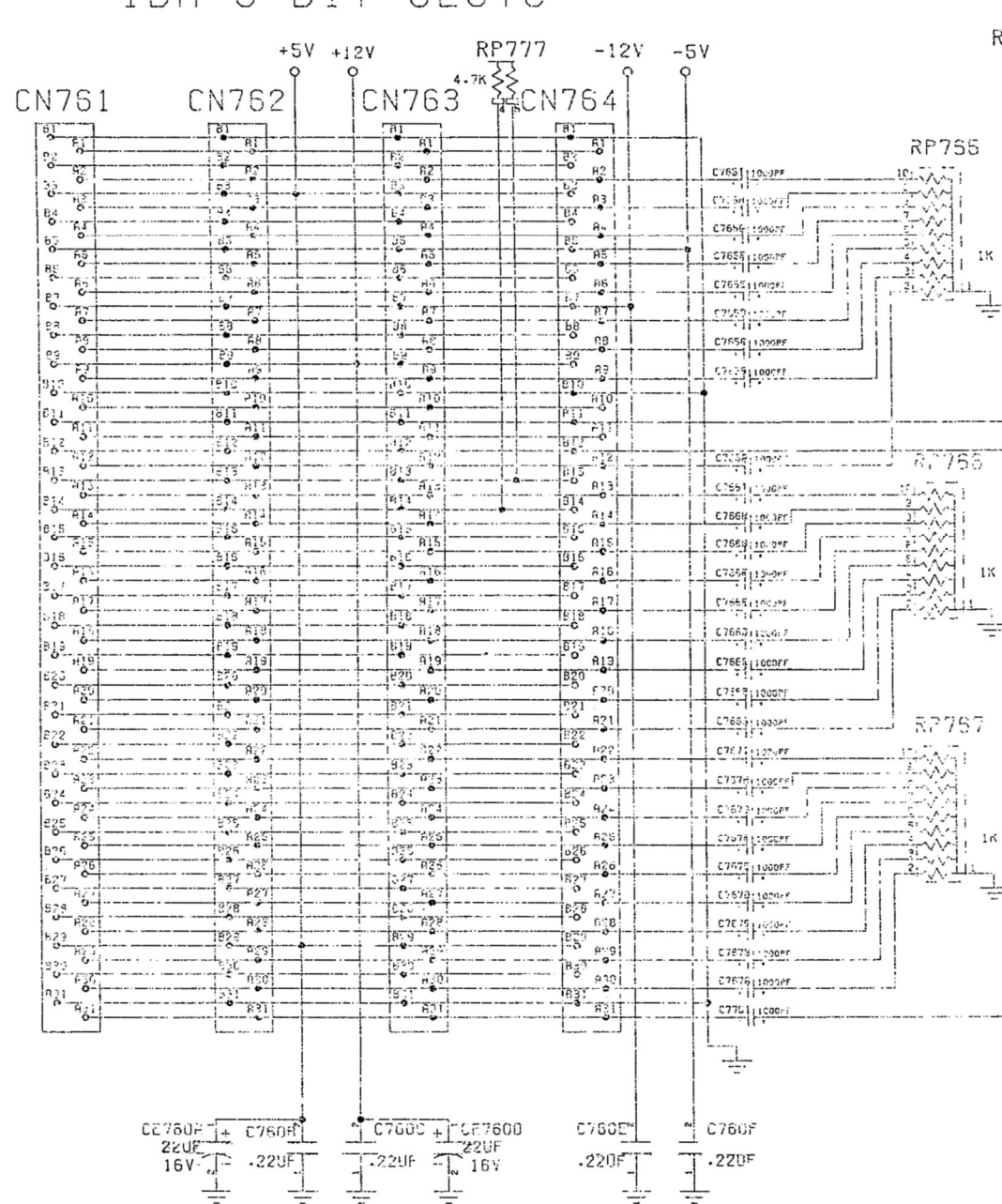
LEND U750-SUB TO SERPAR

750-759

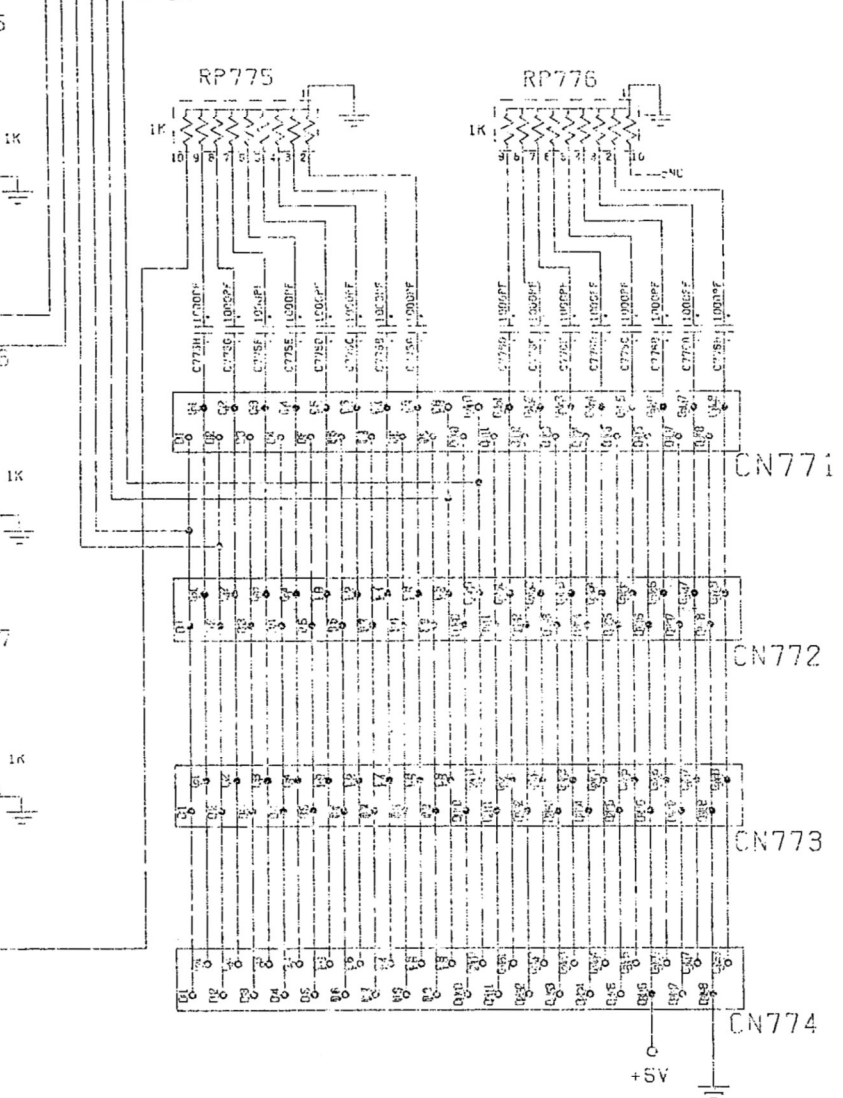
ZORRO

©1991 COMMODORE-AMIGA, INC. INFORMATION CONTAINED HEREIN IS THE UNCLASSIFIED, CONFIDENTIAL AND TRADE SECRET PROPERTY OF COMMODORE-AMIGA, INC. MAY BE USED, REPRODUCED, OR DISCLOSED IN THIS FORMATION WITHOUT THE PRIOR WRITTEN PERMISSION OF COMMODORE IS STRICTLY PROHIBITED.		COMMODORE SCHEMATIC A4000T 13651491c SCALE 100% SHEET 14 OF 14	
L.C.D. GENERATED IN WHICH: (A) IS MAY BE MADE TO THIS DOCUMENT		750-759 750-759	

IBM 8 BIT SLOTS



IBM 16 BIT SLOTS



760-799

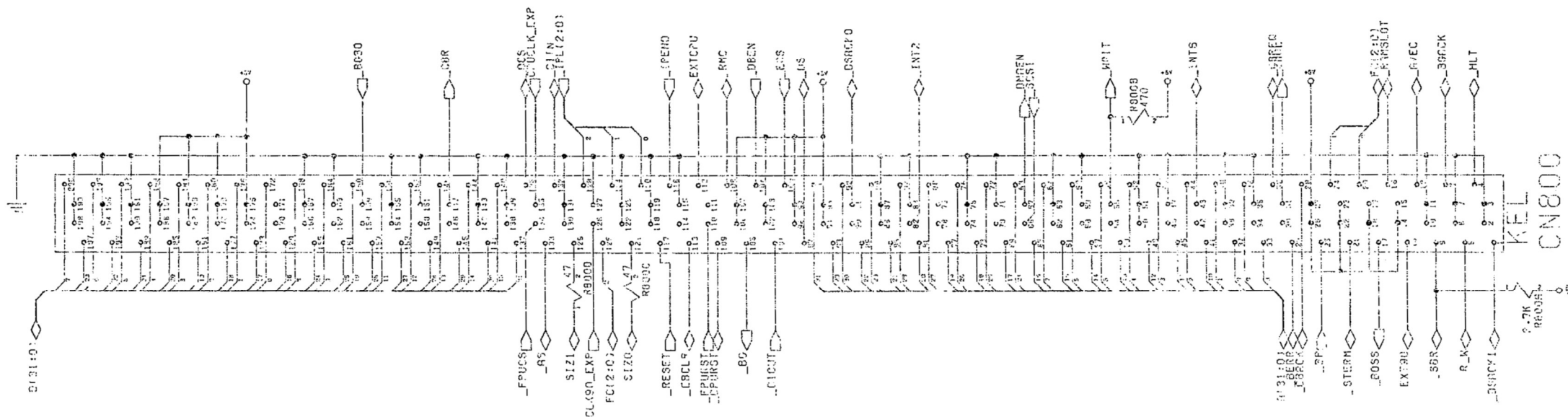
PC SLOTS

©1991 COMMODORE-AMIGA, INC.
 INFORMATION CONTAINED HEREIN IS THE UNPUBLISHED,
 CONFIDENTIAL, AND TRADE SECRET PROPERTY OF
 COMMODORE-AMIGA, INC. ANY USE, REPRODUCTION,
 OR DISCLOSURE OF THIS INFORMATION WITHOUT THE
 WRITTEN PERMISSION OF COMMODORE IS
 STRICTLY PROHIBITED.

C.A.D. GENERATED
 NO MANUAL CHANGES MAY BE MADE TO THIS DOCUMENT

	OFFICER: PAUL LARSON	DATE: 11/21/92	COMMODORE SCHEMATIC A4000T
	DESIGNER: JBL	DATE: 01/11/93	
	REFERENCE GROUP:		
	USED ON: A4000T	REV: 0351	
SIZE: 365149		SCALE: NONE	SHEET: 15 OF 15

AMIGA 32 BIT LOCAL SLOT

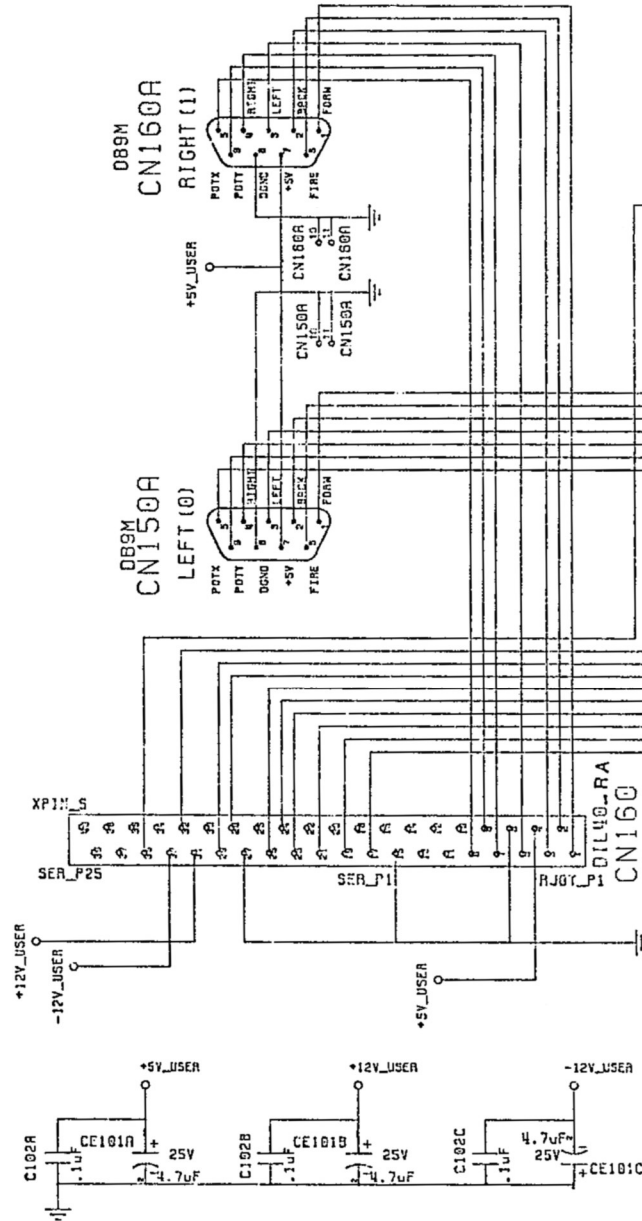


PORTS MODULE

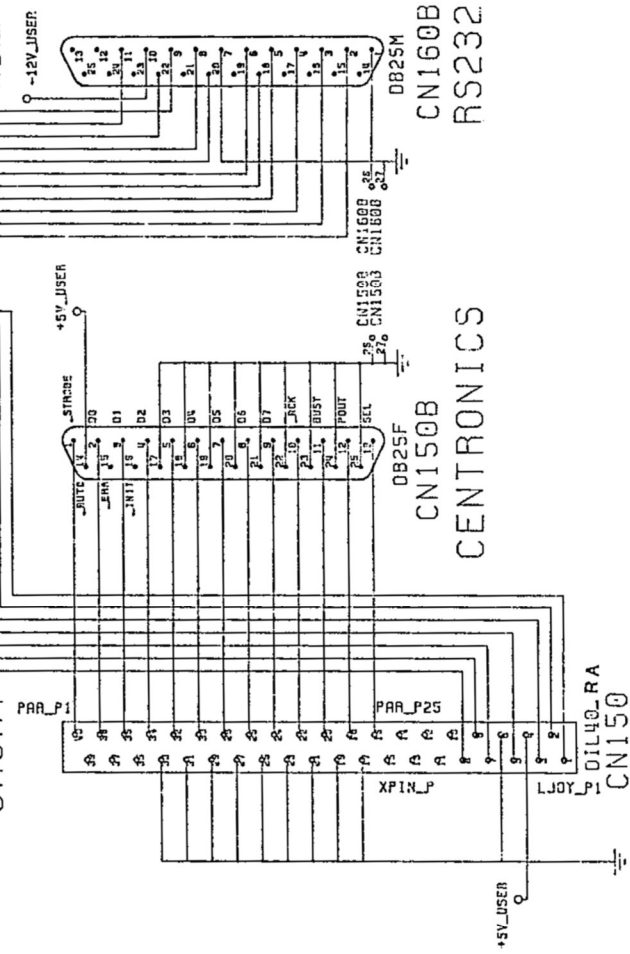
SOLDER (BACK OF BOARD) VIEW

(FROM INSIDE CASE)

LONG



SHORT



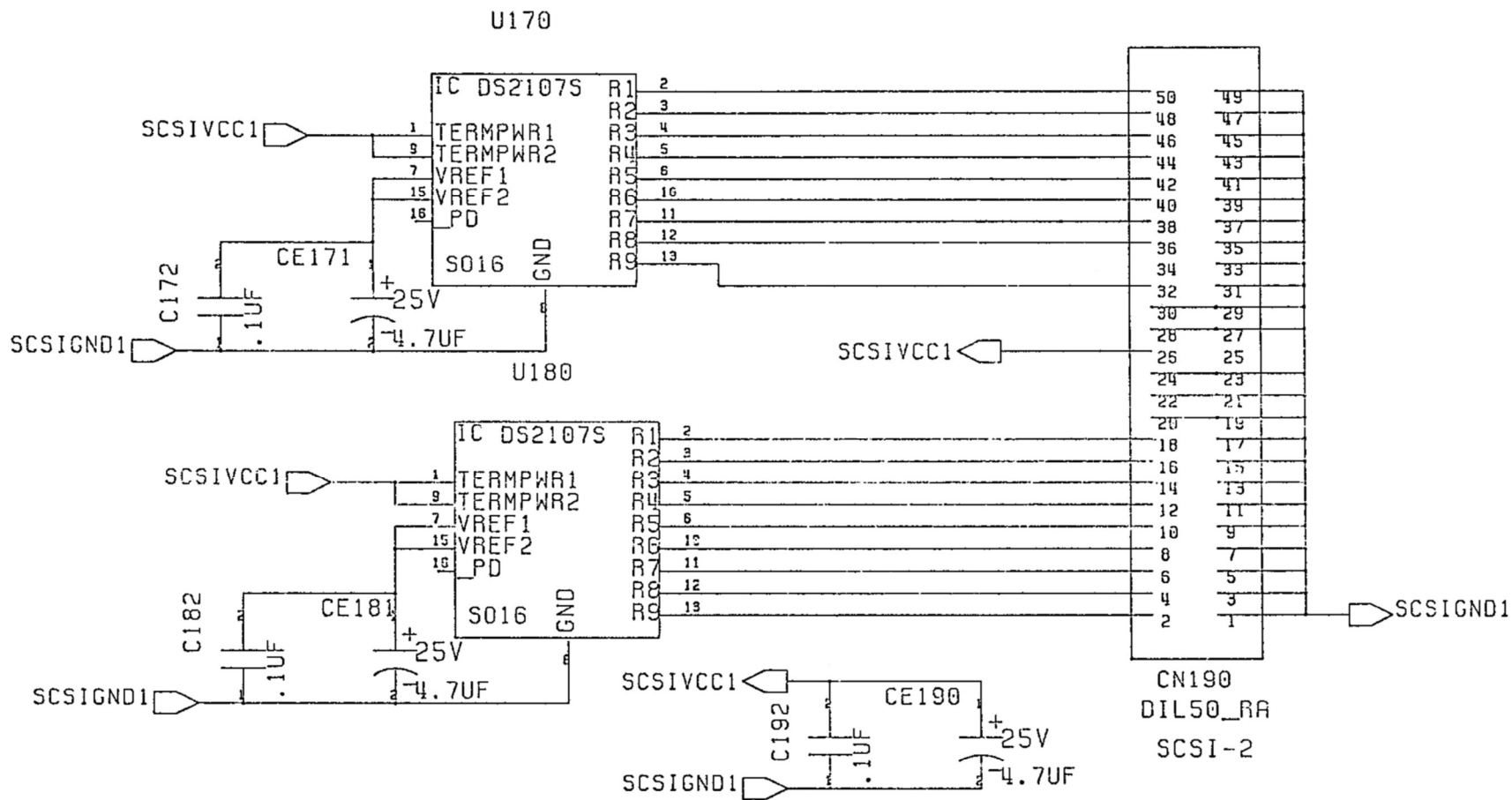
100-169

SER, PAR, JOY PORTS

© 1985 COMMODORE BUSINESS MACHINES
Information contained herein is the unpublished,
confidential and trade secret property of
Commodore Business Machines, Inc. Any use,
reproduction or disclosure of this information
without the prior written permission of
Commodore is strictly prohibited.
C.A.D. Generated
No manual changes may be made to this document

	DATE: 1/1/85	REV: 1
	SCHEMATIC	
	PORTS_MOD	
	FILE: C:\365335\REV	
SHEET NUMBER: 1 OF 2		

REVISIONS			
ZONE	LTR	DESCRIPTION	DATE
1		ADVANCE ENGINEERING RELEASE	4/27/83
			ACB



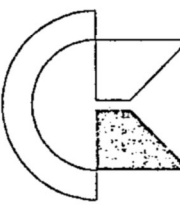
170-199

SCSI TERMINATION

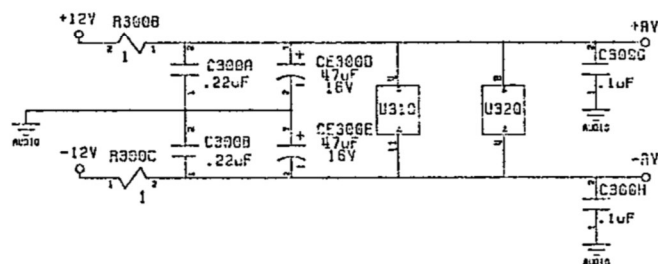
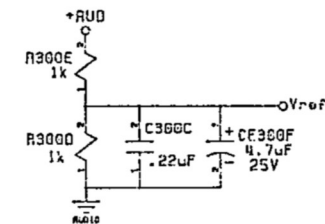
© 1990 COMMODORE BUSINESS MACHINES
Information contained herein is the unpublished,
confidential and trade secret property of
Commodore Business Machines, Inc. Any use,
reproduction or disclosure of this information
without the prior written permission of
Commodore is strictly prohibited.

C.A.D. Generated

No manual changes may be made to this document

	DRAWN BY:	DATE:	Commodore SCHEMATIC PORTS_MOD	
	CHKD:	5/25/92		
	ENGR: PAL	04/05/93		
	APPR:			
REFERENCE GROUP			SIZE	REV
USED ON	NEXT ASSY		C	365335 /
A4000T	365337		SCALE NONE SHEET 2 OF 2	
PATH: /project/ee41/ports_n? scalern				

REVISIONS			DATE	APPROVED
ZONE	LTR	DESCRIPTION		
	1	ADVANCE ENGINEERING RELEASE	4-73 93	LCC

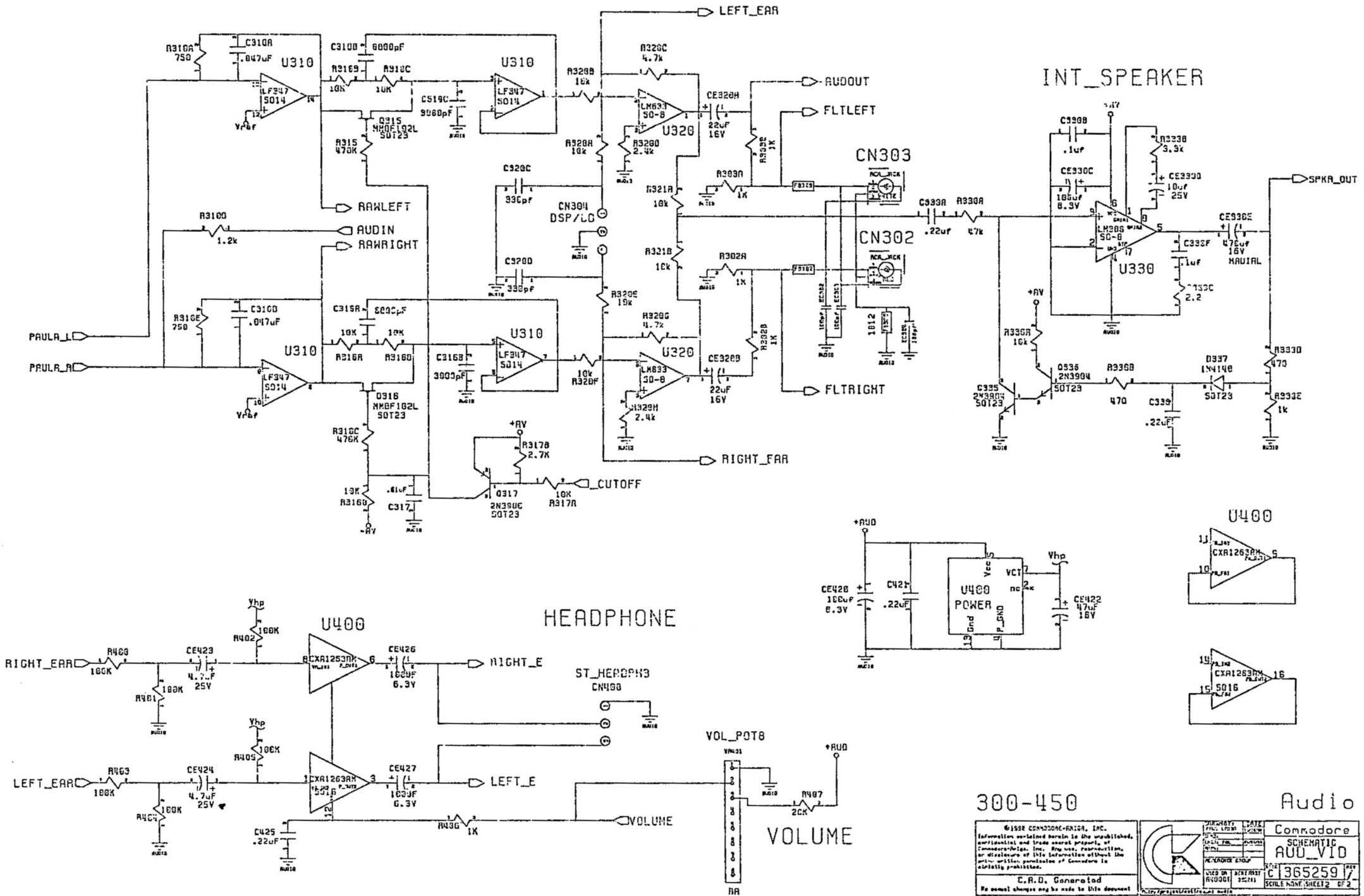


RGB Video

	DATE: 10/10/85 FILE: 100-100000 PAGE: 100000 BY: 100000 FOR: 100000
	REFERENCE: 100000 ACTION: 100000 COMMENTS: 100000
	ACTION: 100000 COMMENTS: 100000
	ACTION: 100000 COMMENTS: 100000
	ACTION: 100000 COMMENTS: 100000

15	Commodore	
14	SCHEMATIC	
13	AUD_VID	
12	SIZE	365259
11	SCALE NEXT SHEET 1 OF 2	

AUD_VID MODULE

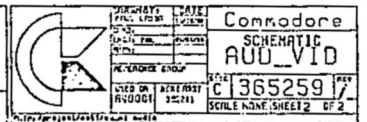


300-450

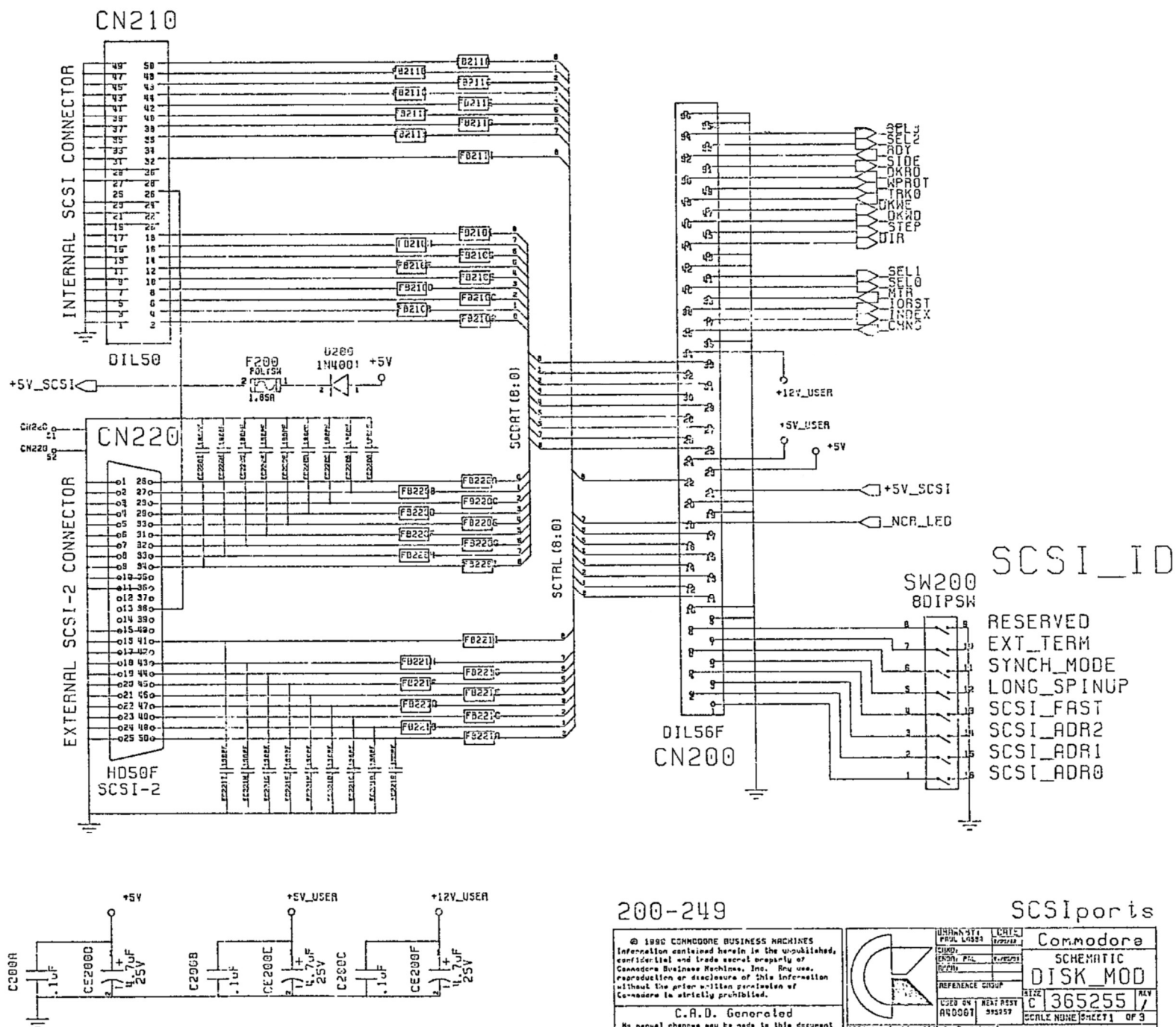
Audio

©1998 CONSUMERS-PRIDE, INC.
Information contained herein is the unpublished,
confidential and trade secret property of
Consumers-Pride, Inc. Any use, reproduction,
or disclosure of this information without the
prior written permission of Consumers is
strictly prohibited.

C.R.D. Generated
No manual changes may be made to this document



REVISIONS				
REQ#	LTR	DESCRIPTION	DATE	APPROVED
	1	ADVANCE ENGINEERING RELEASE	2-23	<i>[Signature]</i>



200-249

SCSI ports

© 1980 COMMODORE BUSINESS MACHINES
Information contained herein is the unpublished
confidential and trade secret property of
Commodore Business Machines, Inc. Any use,
reproduction or disclosure of this information
without the prior written permission of
Commodore is strictly prohibited.

C.R.D. Generated

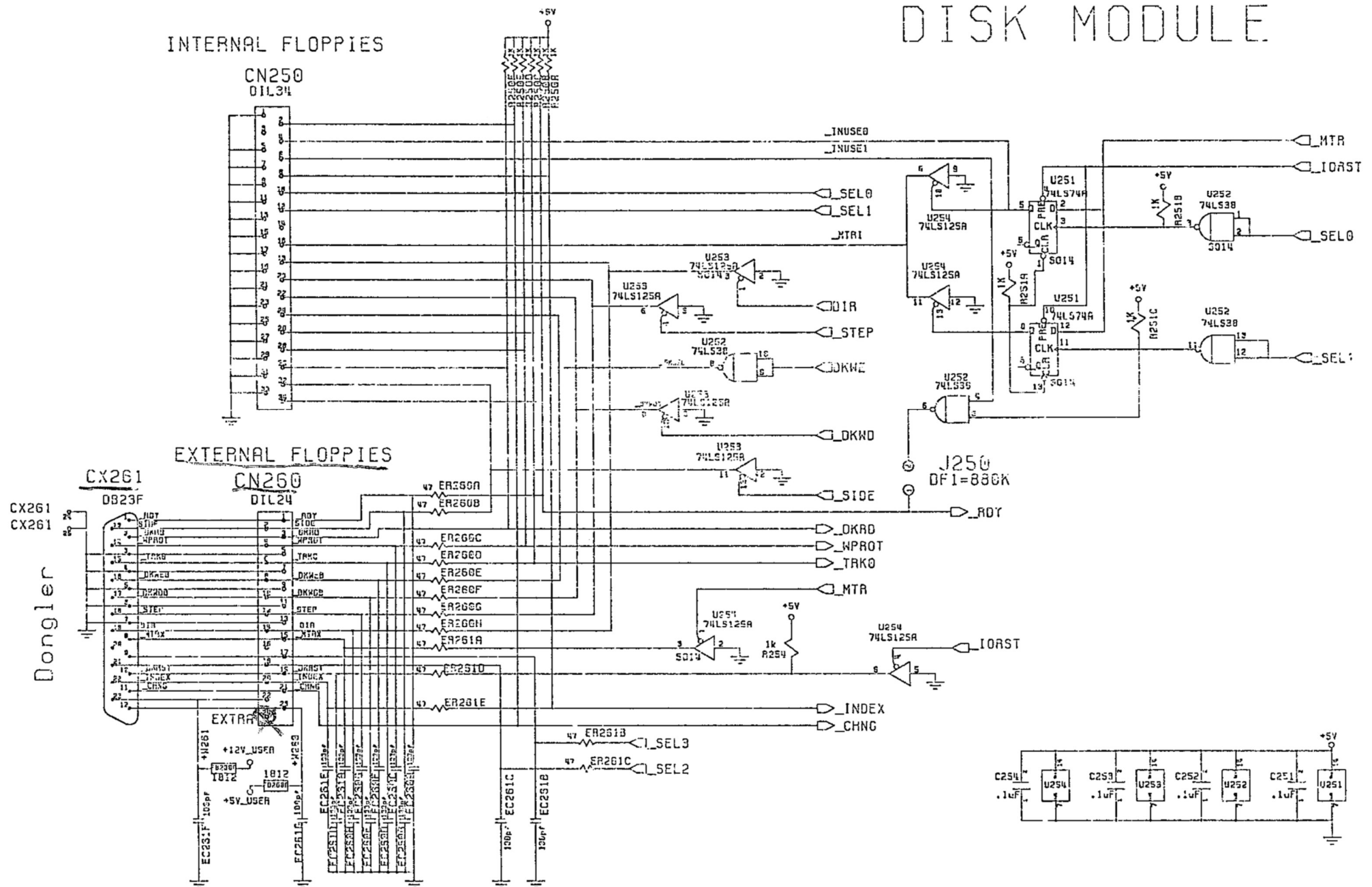
No manual changes may be made to this document



WORKING PREF. 10/23/53	DATE 10/23/53	Commodore
CLASS ELECT. ENG. 10/23/53	DATE 10/23/53	SCHEMATIC
REFERENCE GROUP		DISK MOD
USED BY A00067	ACCT. POST 395257	AT-22 C 365255 A
		SCALE NONE SHEET 1 OF 5

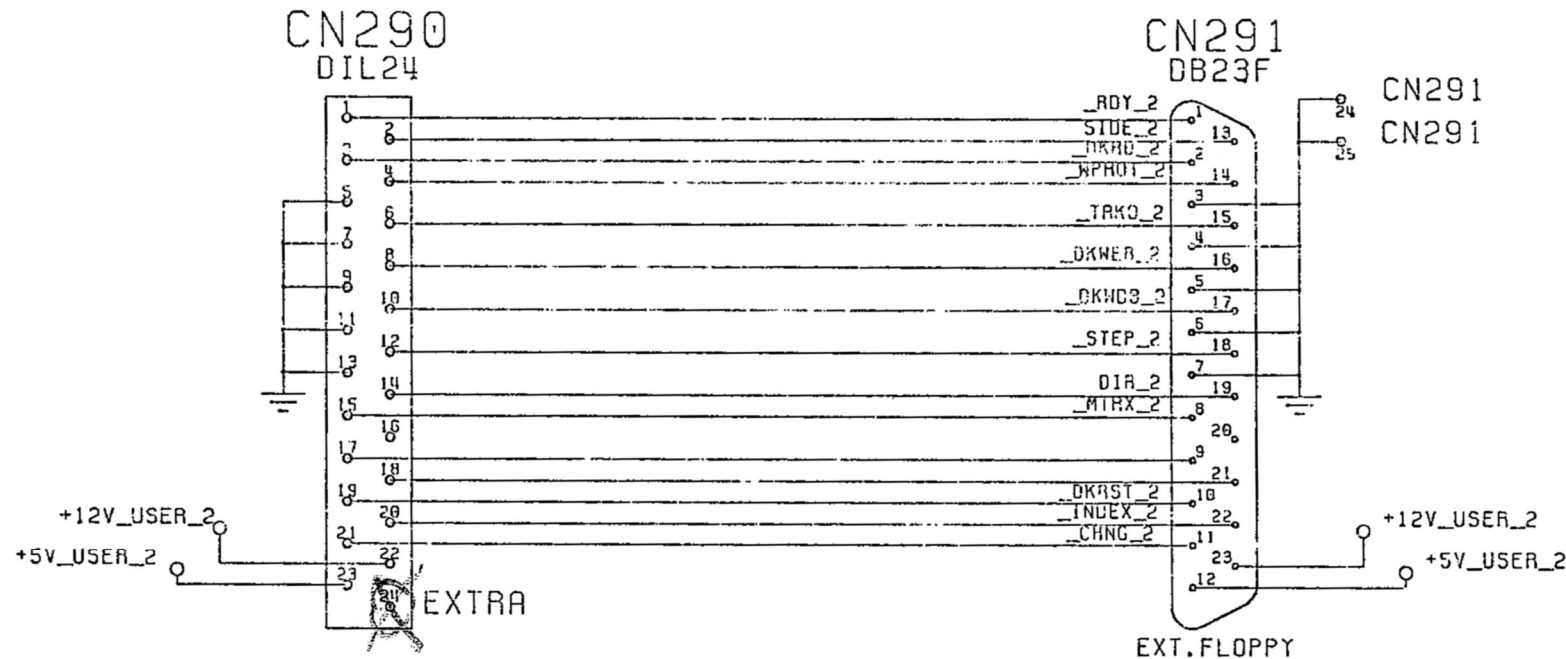
250-289

Floppy



DISK MODULE

' Flidget '



290-299

EXTfloppy widget

© 1990 COMMODORE BUSINESS MACHINES Information contained herein is the unpublished, confidential and trade secret property of Commodore Business Machines, Inc. Any use, reproduction or disclosure of this information without the prior written permission of Commodore is strictly prohibited.		GRABBY: PAUL LASSA CHKD: ENCH: PHL APP:		DATE 8/25/92 CM/25/92		Commodore SCHEMATIC DISK MOD	
C.A.D. Generated No manual changes may be made to this document!		REFERENCE GROUP USED ON 9400BT NEXT ASSY 365257		SIZE C 365255 SCALE NONE SHEET 3 OF 3		REV 1	
PATH: /project/ee4/disk_n2 Flidget							